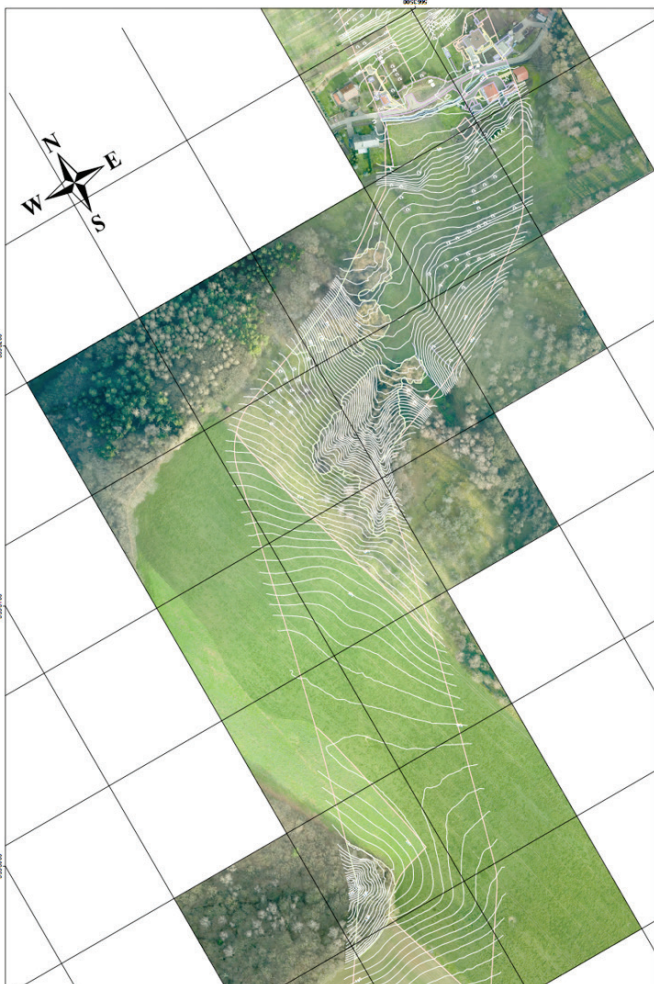


# Pipeline Life Cycle Management

Geo data for planning and operation



# Planning of new oil and gas pipelines



Pipeline corridor with image and elevation information

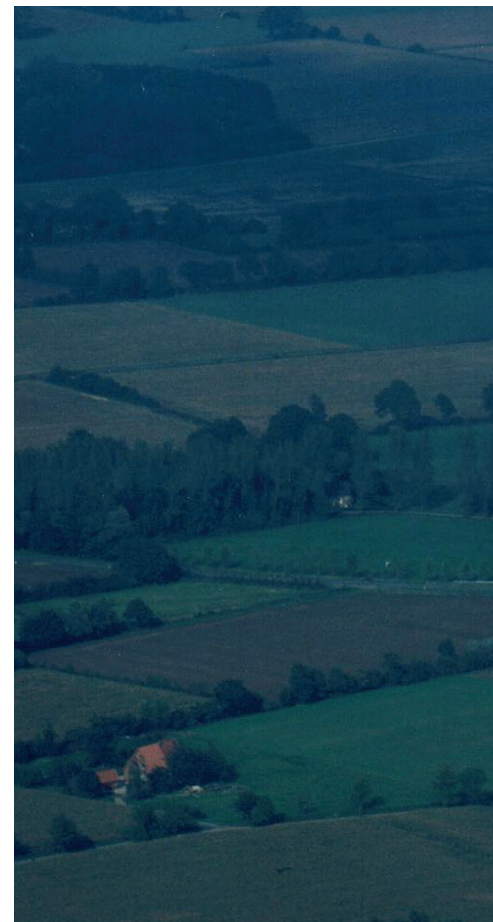


Finding alternative corridors

**Hansa Luftbild** supports the planning of new gas and oil pipelines by providing precise and accurate geo information. Data can be captured off-shore, on-shore, in inaccessible areas, and independent of vegetation density at cost-effective rates and with a swift turn-around.

We use aircraft and helicopters to capture data; key technology is **Airborne Laser Scanning (ALS)**. Our high-performance remote sensing systems and our extensive experience in data capture and processing result in provision of data with exact positioning, high quality and precise detailing.

Our services include environmental impact studies, before/after comparisons, alternative route planning, and final data delivery by web-based GIS as well.



# Supervision of existing oil and gas pipelines

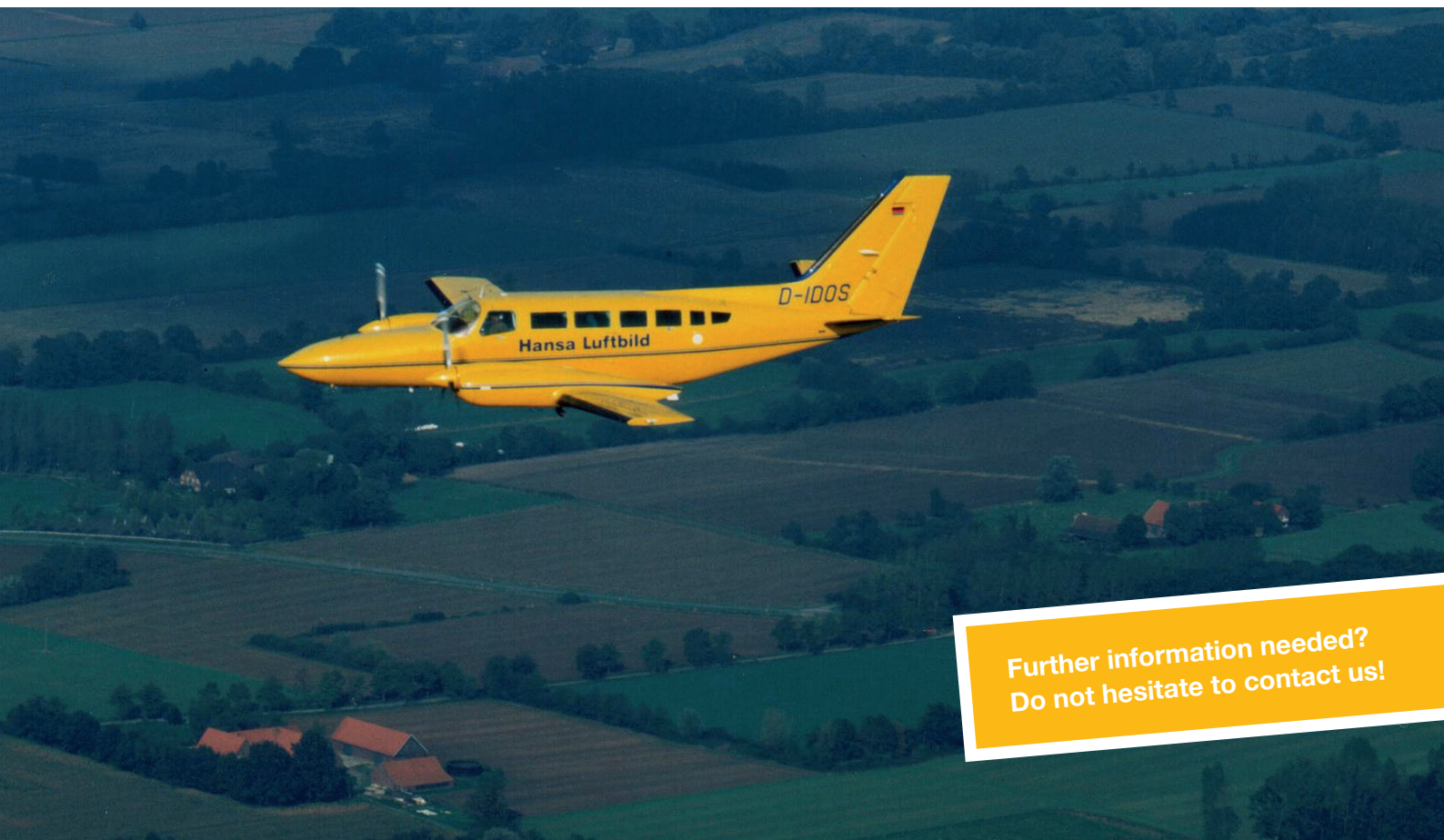
**Hansa Luftbild** inspects existing oil and gas pipelines by using remote sensing sensors mounted on helicopters and aircraft. Our precise and accurate data can show e.g. changes in land coverage or changes in surface heights above the pipeline corridor.

Following the construction of pipelines, **Hansa Luftbild's** products disclose the vegetation health during the process of recultivation and rehabilitation.

Our geospatial software specialists can support the integration of geo information into your business processes.

Apart from the standard geo data of CAD and GIS, less structured sources such as texts, photos or videos can be incorporated into the workflow.

Further services for oil and gas industry include 3D visualisation for Building Information Modeling (BIM) and 3D mapping of refineries, storage facilities and tank terminals for documentation and management.



Further information needed?  
Do not hesitate to contact us!



# Transforming Geo Information into Solutions

State of the Art. Worldwide. Since 1923.

- ◆ Geo Consulting
- ◆ Project Management
- ◆ Aerial Surveys
- ◆ Mobile Mapping
- ◆ Geo Information
- ◆ Photogrammetry
- ◆ Geo Software Services

