

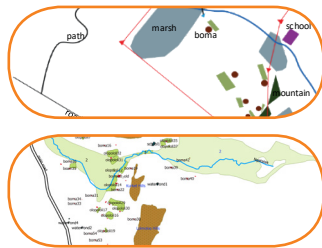
its4land Land Administration Toolbox

Innovative Geospatial Tools for Fit-for-Purpose Land Rights Recording

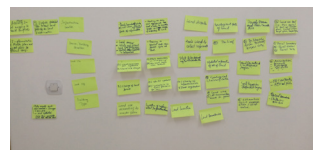


The **its4land land administration toolbox** delivers a suite of land tenure recording tools and consulting services which respond to the Sub-Saharan Africa needs to rapidly map millions of unrecognised land rights.

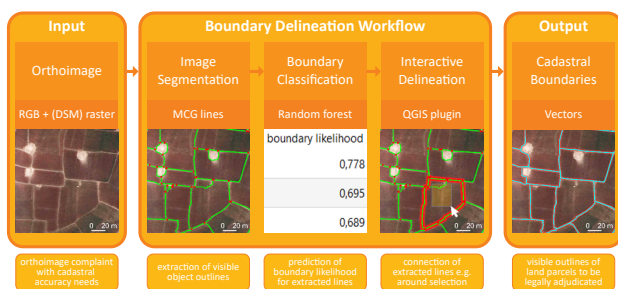
- **Smart Sketchmap** (Smart SkeMa) to record aspects of people to land relationships where the spatial component is captured using hand drawn sketch maps and described in a qualitative way (not surveyed) and then automatically transformed for further usage in a GIS



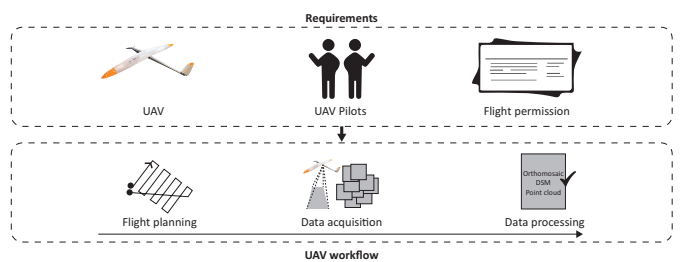
- **Needs assessment.** Interactive workshops to collect data of specific needs, market opportunities, and readiness of end-users in the domain of land tenure information recording



- **Semi-automatic visible boundaries delineator** which facilitates image-based cadastral mapping by extracting visible boundaries automatically and by supporting the delineation procedure



- **UAV-based data acquisition** guidelines and customizable workflows in the context of land administration

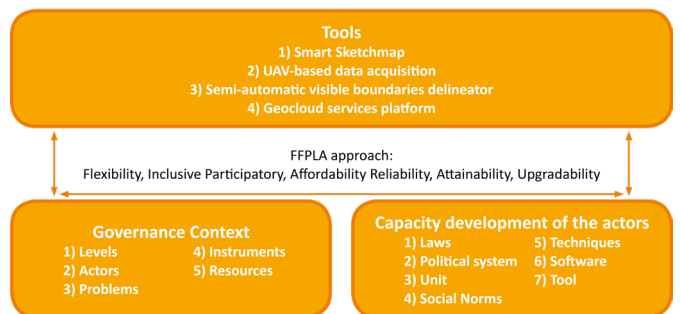


- **A general and universal platform** for operating, integrating and disseminating land administration workflows by a set of high level geocloud services based on three main concepts:

- LADM
- Web based API
- Geocloud services platform



- **Governance and capacity development** models for the use of geospatial tools



Project Facts

CALL: Collaborative Projects Call 2- ICT12 | **EXECUTION:** From February 2016 to February 2020

COORDINATOR: Mila Koeva (University of Twente)

PARTNERS: University of Twente (Netherlands), University of Munster (Germany), Katholic University of Leuven (Belgium), Hansa Luftbild (Germany), INES (Rwanda), Technical University of Kenya (Kenya), Bahir Dar University (Ethiopia), ESRI Rwanda (Rwanda)

CONTACT: contact@its4land.com

www.its4land.com